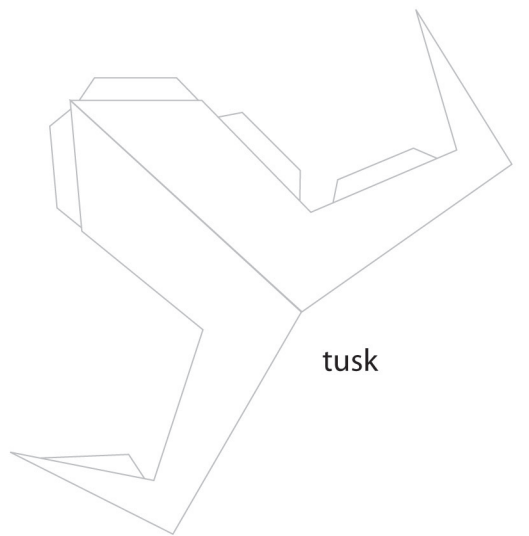
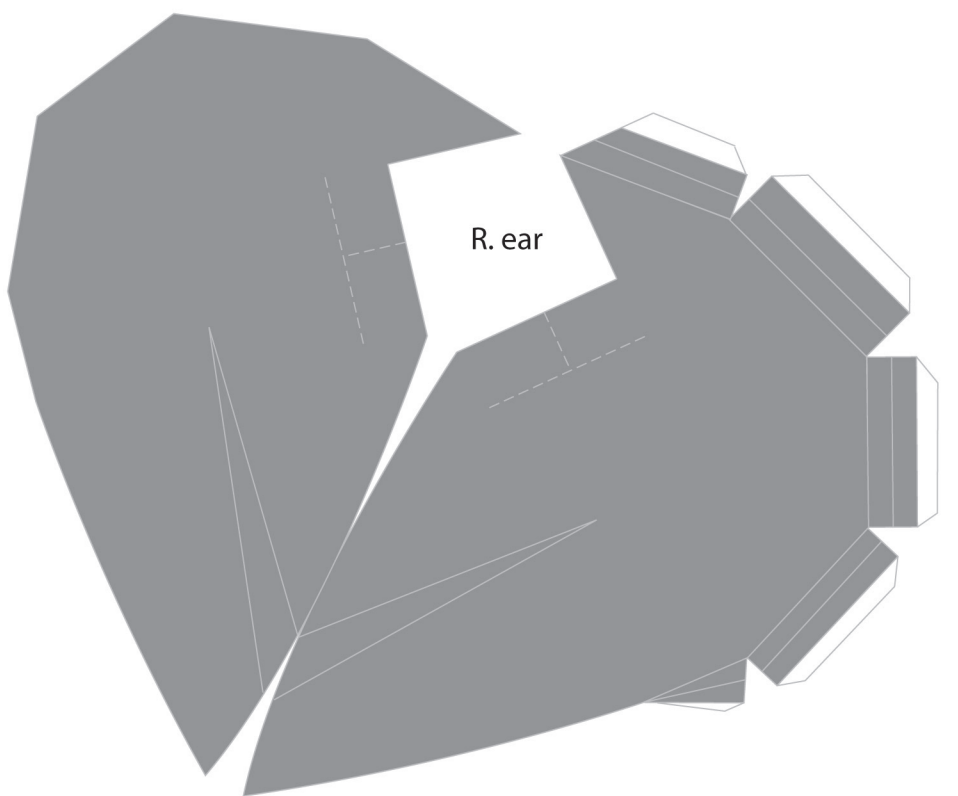
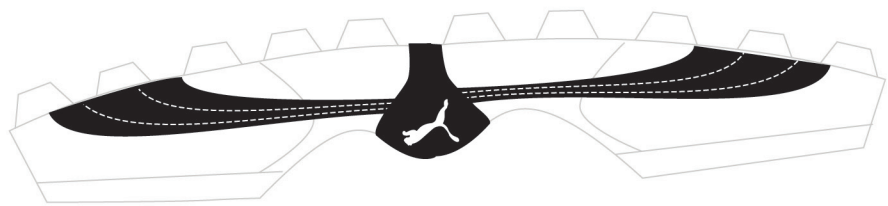
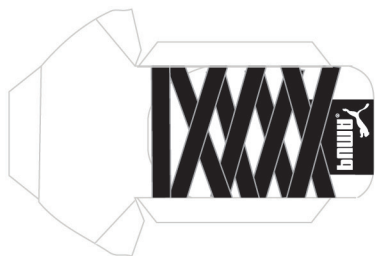


sneakers



“NickoBunny”™



brannonrolins
youdontseeus.blogspot.com

HED
KASE®

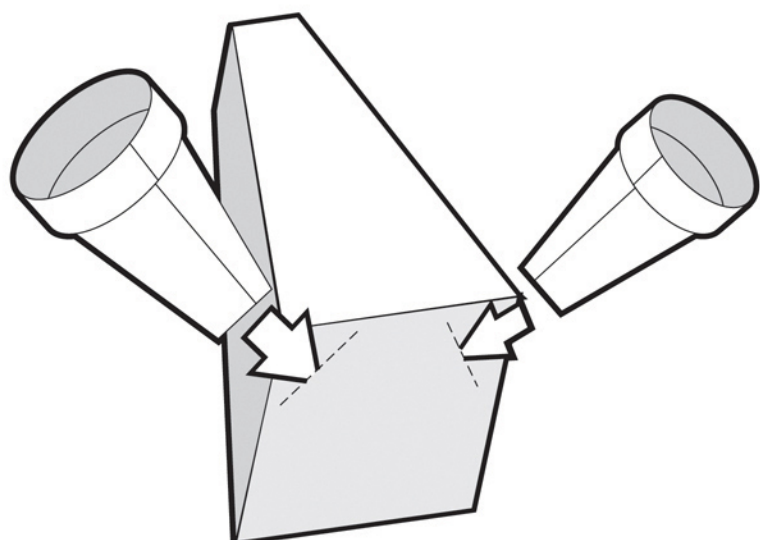
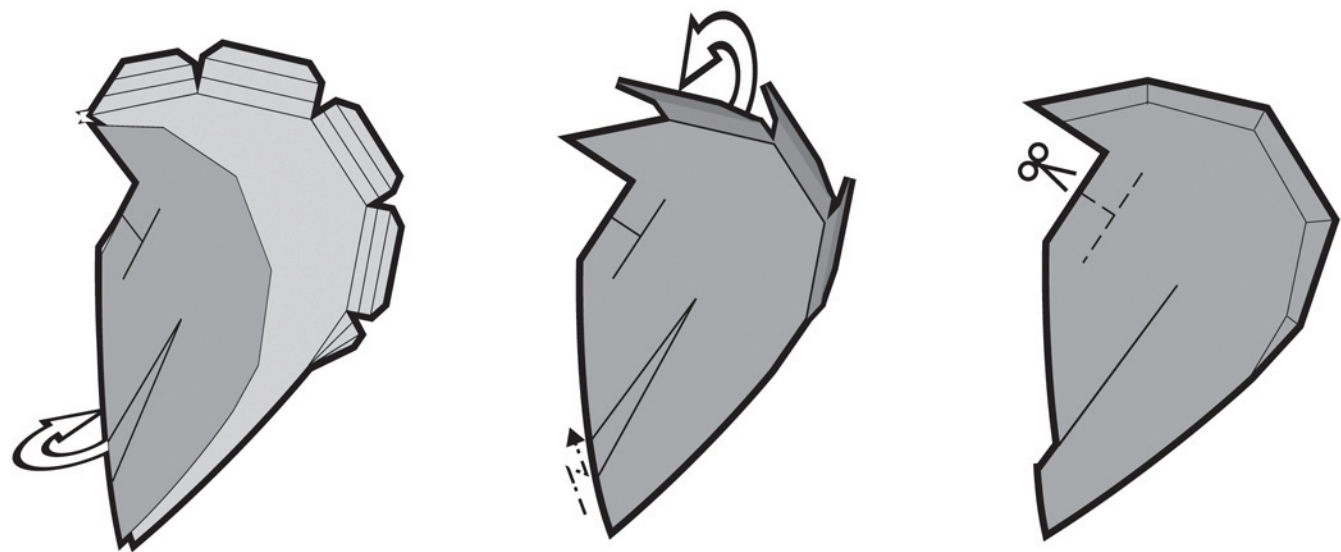


CUT ALONG DOTTED LINES



NOTES (just so you know)

Ear Assembly: Fold ear piece in half (DO NOT GLUE). Take the flaps and fold each down over the smaller section (you can glue the white sections to the ear if you desire, but it's optional). Pleat the ear through both layers as indicated (the inner ear should cup). Finally, cut where shown and insert the flaps into the slits in the head.



Body Assembly: Score folds and cut slits where indicated. Cut out and fold body. Construct and insert arms. Glue body together. Construct legs and slip into slits in the bottom of the body. Glue if necessary.

The sneakers have extra paper for the construction of the sole. Once you get the shape of the shoe and glue it down, you can cut off the excess. The sneakers should be able to fit snugly over the top and bottom of the pant cuffs.

Print at 100% for 13x19 printer. Otherwise, reduce image 30%.